



Local Voices

March 2026

Tom Price Community Survey Results

Rio Tinto has been part of the Western Australian community for 60 years. Over this time, we've made a meaningful contribution to Tom Price through local employment, education and training, and partnerships with government and community organisations.

Our Local Voices community perception survey program helps us better understand the needs and priorities of residents, so we can support more vibrant and thriving communities.

Each year, confidential online surveys are conducted across the region by leading engagement science organisation Voconiq. These surveys are an important part of our commitment to listening to communities and continuously finding better ways to work together.

Here's a snapshot of the 2025 Local Voices survey results for Tom Price, and how we're turning community insights into action.

What you value most



Community commitment and investment



Community health, safety and wellbeing



Good economic and environment impacts



Well maintained infrastructure and housing



Local employment and quality education

2025 Tom Price community survey results and insights

Here's a snapshot of the feedback we received from Tom Price residents during our 2025 Local Voices community survey:

Areas you are most and least satisfied with:



Most satisfied with...

1. Feeling safe and disaster response
2. Standard of living
3. Our contributions to the economy

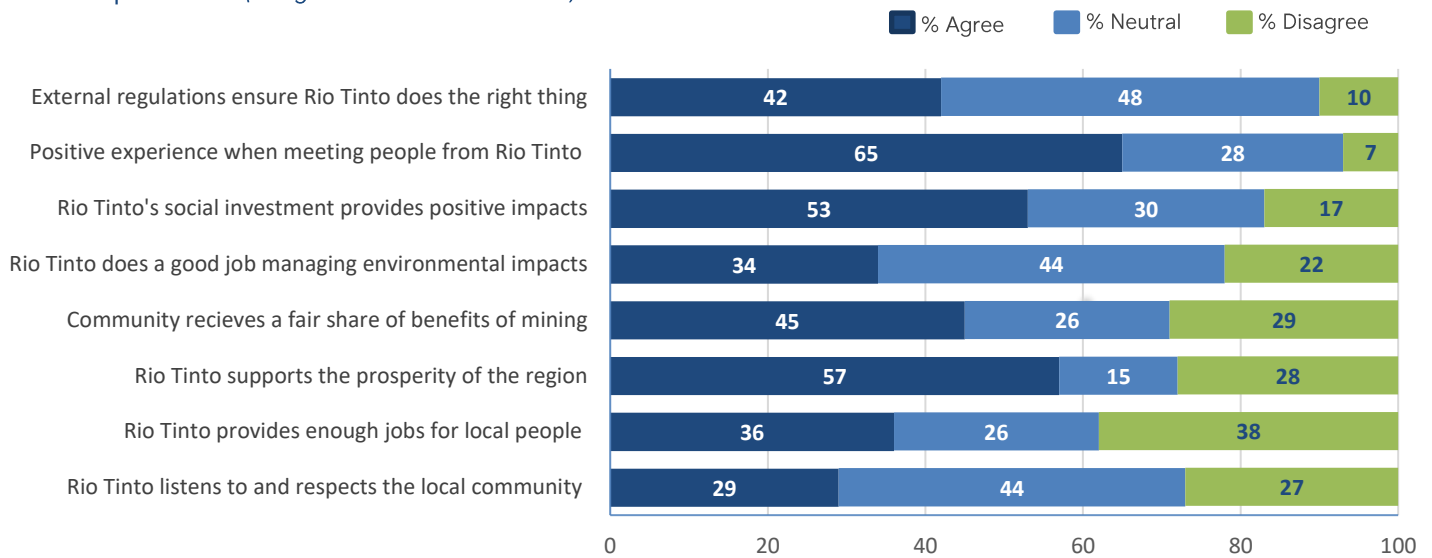


Least satisfied with...

1. Access to health and wellbeing services
2. Dust and water quality
3. Housing availability and affordability

What you think about Rio Tinto in Tom Price...

Understanding what's important to you is important to us. Here's what you think about our current business practices (*% agreement with statement*):



Sharing more information about our impacts and operations

62%

of survey respondents told us they'd like more information on our current operations, impacts and plans for the future. In particular, you'd like more information on our social investment initiatives, environmental impacts and benefits, economic contributions and support for local business.

Top 5 areas where you want us to prioritise investment:

1. Health and wellbeing initiatives
2. Community facilities and infrastructure
3. Education and training opportunities
4. Protection of the environment
5. Local economies

Top 5 issues and suggestions you had for us:

1. Continue to invest in community infrastructure, maintain a strong local presence and commitment
2. Prioritise residential roles to strengthen community cohesion and stability
3. Strengthen government partnerships to expand health and medical services.
4. Support events, volunteering opportunities and local community groups
5. Partner to support local schools and provide education and training pathways

2025 Tom Price community survey insights

Why is this important to us?

Local communities are at the heart of everything we do. They're where we live, work, and call home. We know our success depends on building strong relationships with the people and places that support us. That's why we're committed to listening, learning, and working together to create lasting, positive change in Tom Price.

Factors that influence your trust and acceptance of us

You told us the top factors are:



Our business following regulations and being held to account



Listening and responding to community feedback



Distributing a fair share of benefits and community satisfaction



Good environmental management



Protection of local cultural heritage



Providing positive economic impacts

Managing our local environment and minimising impacts

We are committed to embedding sustainability into everything we do. Our local teams are focused on minimising impacts while maximising opportunities to protect the environment.

Here's what you told us about our impacts and what areas you think we should prioritise investment in.

Top perceived environmental impacts in Tom Price

1. Increased dust
2. Decreased water quality
3. Availability of water
4. Local cultural heritage sites
5. Increased noise

Where do you think we should prioritise investment?

1. National Parks partnerships
2. Threatened flora and fauna species
3. Coastal environments
4. Regional conservation management

65%

think it is important for us to invest in initiatives to reduce climate impacts. **37%** are unaware of our investments to reduce these impacts.

Contacting us

55% said they know how to contact us in Tom Price, while 45% don't.

Social media is the preferred channel for updates on our operations, followed by direct engagement with employees and email.

Tom Price 2025 survey demographics:

165

Surveys completed

150+

Comments provided

40%

Employees/contractors

26%

Lived locally for 10+ years

13%

Business owners

14%

Indigenous respondents

Turning community insights into action

We're listening, learning and making changes

We are committed to turning survey insights into action! Here's some examples of where community feedback through local consultation, engagement or Local Voices surveys has stimulated action in Tom Price.

What you told us and what we're doing...



You want better access to health and medical services – we've committed \$20m to help build the new Tom Price Hospital in partnership with the State Government. Pop up information sessions have been completed, and construction will commence in May 2026.



We are funding Earbus in partnership with Telethon to improve hearing health for children. Last year, Earbus conducted 1100+ hearing screenings across Paraburdoo and Tom Price.



You want more funding and support for local community groups – last year we provided 16 Tom Price groups with over \$73,000 in funding through our Rio Tinto Community Giving Grants program.



You want upgrades and new sporting infrastructure – together with the Shire of Ashburton we've invested in significant enhancements at Minna Oval and have upgraded the lighting at Clem Thompson Oval to provide vibrant new spaces for sport, recreation, and cultural connection in Tom Price.



You want more education and training opportunities for youth – This year, through the CoRE Academy at Tom Price Senior High School, we're providing mentoring opportunities and on-site visits, giving students first-hand insight into mining careers.



You want better housing and housing policies – we've done a lot of work to streamline and improve our housing program and have also increased the Home Improvement Program (HIP) subsidy.



You want more opportunities and support for young people – in 2026 we will launch the BOUNCE Wellbeing program in Tom Price, in partnership with Anglicare and Telethon. The program will provide dedicated emotional wellbeing support for youth aged 8-13 years.



We've also partnered with 'Athletics for the Outback' and the Perth Wildcats to bring professional sportspeople to town to inspire the next generation of athletes from Tom Price.



You want Rio Tinto to contribute to community groups – in 2025, 320 of our employees volunteered 957 hours of their time to work on specific projects for 16 local non-profit organisations.



We're pleased to continue our long-standing partnership with the Tom Price Cadets who provide invaluable community service to the Tom Price community. Over 100 year 7-12 students are now actively participating in the program.



You want us to better support local Indigenous residents – late last year we launched the EOI Tom Price ATAL (Aboriginal Training and Liaison). We are currently supporting 11 indigenous persons to assist with personal growth and as a potential career pathway into Rio Tinto.



You want better airport facilities – we've just upgraded Paraburdoo Airport to provide more seating, fans, shaded areas, access to Starlink and free bottled water. We hope to be able to share updates on a proposed new airport soon.

What we're doing with your feedback

We share these survey results and insights across our business to ensure we all have a clear understanding of the needs and priorities of the Tom Price community. Your feedback informs our planning, investment and decision-making.

Community feedback is highly valued and helps us prioritise where we need to make changes, increase support, reduce impacts, and build new partnerships to enhance benefits across the community.

Your feedback, gathered through Local Voices surveys and other engagement programs also helps shape our Social Impact Management Plans.

How local community groups benefit

As a thank you for completing the 2025 survey, participants could nominate a Tom Price community group of their choice to receive a cash donation through the Local Voices Rewards program.

Five not-for-profit community groups in Tom Price shared more than \$1600 as a result of community participation in our 2025 survey.

2025 survey results and our 2026 survey

To view the 2025 survey results, register to participate in the June 2026 survey or to seek more information go to

www.voconiqlocalvoices.com/riotinto/pilbara

Your feedback is always welcome

You can visit, call or email our friendly team at the **Rio Tinto Tom Price Communities Office** Lot 1, Shop 6

Stadium Rd, Tom Price

E: communityfeedback@riotinto.com

Community Hotline: 1800 992 777