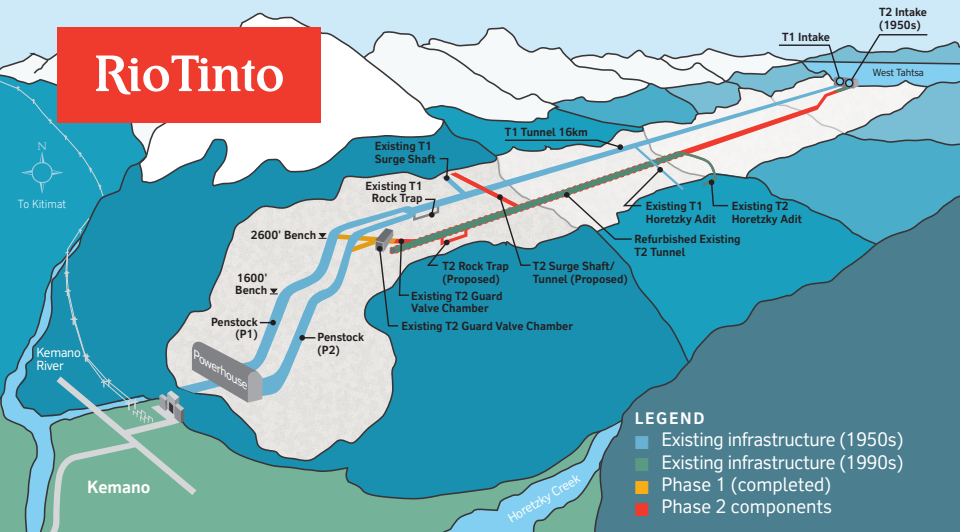


RioTinto



Project Facts:

- All major regulatory approvals were received in 2012
- Phase 1 of project is complete
- Phase 2 requires 7.6 km of tunnel to be excavated by Tunnel Boring Machine (TBM)
- Use of the 1950's T2 intake will result in reduced environmental footprint
- No more water is required than what is in the existing water license
- The new tunnel would run simultaneously with the old tunnel, feeding the existing Kemano powerhouse

Kemano T2 Project

The project received approval from Rio Tinto's Board in December 2017.

Completion of a second tunnel will ensure the long-term reliability of the power supply from the Kemano Powerhouse, which powers Rio Tinto's BC Works smelter in Kitimat.

Construction of the project is expected to be complete in 2020.

For more information about Rio Tinto:

✉ Jennifer.campeau@riotinto.com

☎ 250-567-5105

🌐 riotinto.com/bcworks

📘 facebook.com/RioTintoBCWorks



RioTinto

Jobs and contracting opportunities:

At peak construction, the total construction workforce could be in the range of 300, however this number will vary and will depend on the final workforce plan. All workforce requirements will be arranged through the main contractor and through the Project Labour Agreement with the unions working on the project.

For employment and contracting opportunities, you can contact:

Frontier-Kemper Aecon, Main Contractor:

Tel: 778-807-4970

Web: www.frontierkemper.com/projects/KemanoT2

Trade related employment:

Operating Engineers, Local 115

Wayne Mills

604-473-5217

wmills@iuoe115.ca

dispatch@iuoe115.ca

Electrical Workers, Local 993

Glen Hilton

250-376-8755

Bm@ibew993.org

Specialized Workers, Local 1611

Roger Bennett

250-615-8196

rbennett@cswu1611.org

dispatch@cswu1611.org

FRONTIER-KEMPER | AECON

A JOINT VENTURE