

Air conditioning tips

Here are a few tips which may assist you to run the air conditioner in your home more efficiently, to avoid “ice-ups” and maintain a clean environment, and minimise the risk of mould occurring in your home.

Thermostat:

- o Do not set thermostat below 21°C as this could lead to the air conditioner unit “icing up” – which will stop airflow. This may attract a call out fee.
- o Recommended setting is between 21°C and 24°C, however if you run your air conditioner at 21/22°C you will use considerably more power.
- o In multiple occupancy buildings (flats and townhouses) you must keep your air conditioner unit running at all times in summer months and/or if you are away.

Grill / Diffuser Cleaning:

- o Clean air conditioner grills monthly to remove dust build up.

Obstructions:

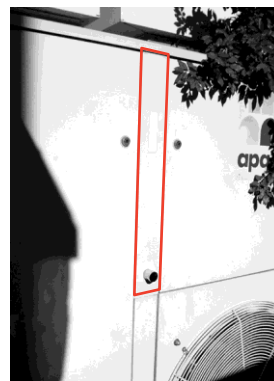
- o Do not stack/store items around or near the air conditioner unit and clear away debris from these areas regularly. These obstructions reduce the air flow which will affect the performance of the air conditioner.

Filter Cleaning:

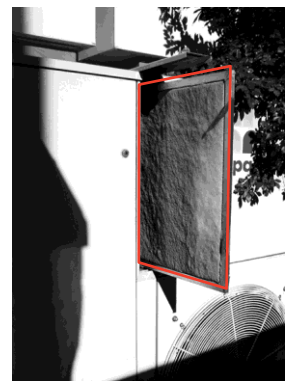
- o You should clean the air conditioner filter at least once a month.
- o The filter is located on the front of the air conditioner unit itself, behind a metal or a plastic cover if a split system air conditioner.

To clean the filter:

Apac / Frigopol / Email Air Conditioning Unit



Filter cover



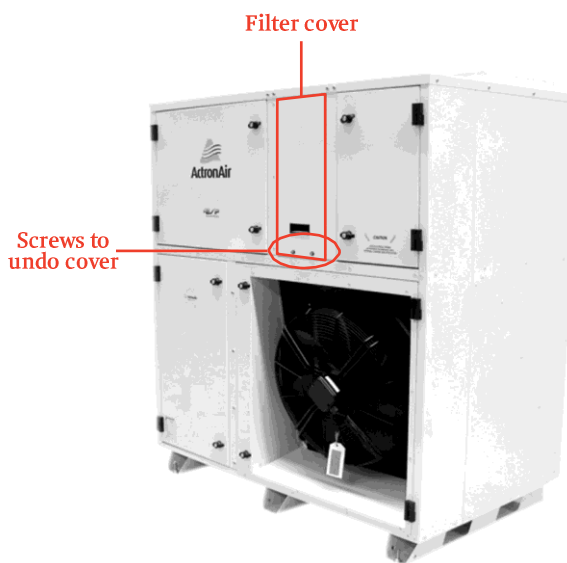
Filter

- 1) Turn air conditioner OFF
- 2) Remove filter cover – lift 20mm and remove outwards
- 3) Slide filter out fully
- 4) Hose down filter
- 5) Shake filter to remove excess water and leave out to dry
- 6) Once dry, replace filter into air conditioner unit
- 7) Replace metal cover
- 8) Turn air conditioner ON

The air conditioner will take 1-3 minutes to start. This is normal.

To clean the filter:

Actron air conditioning unit



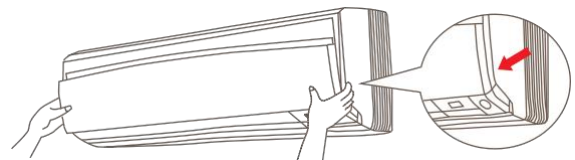
- 1) Turn air conditioner OFF
- 2) Remove filter cover by un-doing the two small screws with a Phillips screwdriver. Lift and pull cover outwards
- 3) Slide filter out fully
- 4) Hose down filter
- 5) Shake filter to remove excess water and leave out to dry
- 6) Once dry, replace filter into air conditioner unit
- 7) Replace metal cover
- 8) Turn air conditioner ON

The air conditioner will take 1-3 minutes to start. This is normal.

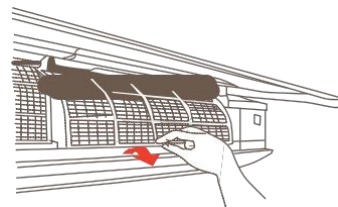
***Please Note:** Some Actron air conditioning units may have a disposable/paper filter, if this is the case please contact our Pilbara Service Centre on **1800 992 777** to arrange for this to be changed over to a washable filter.

Split system air conditioning unit

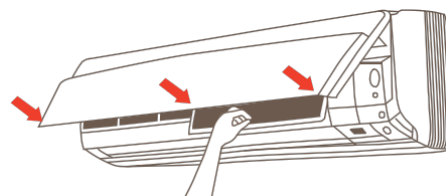
- 1) Turn air conditioner OFF
- 2) Open the front panel by holding the panel by the tabs on the two sides and lifting until it stops with a click



- 3) Pull out the air filters by pushing a little upwards at the tab at the centre of each air filter, and then pull it down
- 4) To clean the air filter, wash with water or clean with vacuum cleaner
- 5) Shake filter to remove excess water, leave out to dry



- 6) Once dry, replace the air filter as it was into air conditioner unit by inserting claws of the filters back into slots of the front panel
- 7) Close the front panel slowly and push the panel at three points; one on each side and one in the middle
- 8) Turn air conditioner ON.



Report any faults or identified problems to the Pilbara Service Centre on **1800 992 777**.