



**RioTinto**

# Sustainability Report 2019

KIT



At BC Works, we are committed to sharing the value we create as part of our operations through taxes, employment, procurement opportunities and community partnerships. We promote governance over the benefits of our operations by being transparent in the contributions we make and by reporting local employment and procurement metrics.

Our actions and delivery on what we say we will do, is an important factor of the success of BC Works. As we look ahead to 2020 and beyond, we are focused on leading a productive and cost-effective operation, while continuing to be a leader in the world market for aluminium and a company of choice for our employees, partners, communities and customers.



## Highlights



BC Works operations maintains certification with the highest internationally recognized standard for environmental, social and governance practices.



BC Works contributed over \$843 million to the BC Economy.



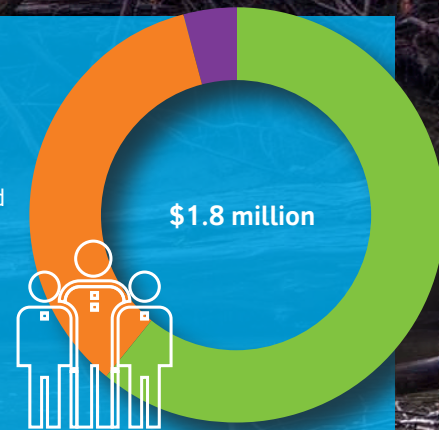
725 megawatts of clean, renewable energy produced to power the BC Works smelter operations.



Increase in investment in the BC economy, with \$600 million to the Kemano T2 Project to support sustainable, long-term operations.

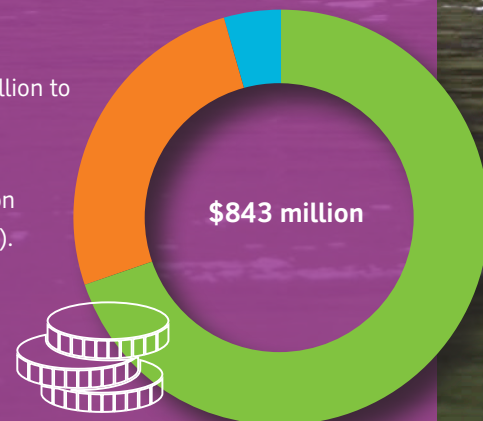
## Our communities

- More than \$1.8 million contributed in 2019 towards community initiatives.
- The majority of funds were allocated to watershed organizations (61.6%), with the remaining allocation between Kitimat-Terrace organizations (34.7%) and the rest of B.C. (3.7%)
- Rio Tinto engages with Indigenous communities across our operating areas, including four First Nations in the Kitimat/Terrace area, and twelve First Nations in the watershed area. Strategic partnerships with Indigenous communities in 2019 include community fire response and conservation initiatives.



## Economic

- In 2019, BC Works contributed over \$843 million to the provincial economy.
- \$589 million in direct spend in BC towards contracts and services, including \$319 million related to the Kemano T2 Project (69.9%).
- \$217 million in annual salaries, benefits and pension payments (25.8%).
- \$35 million in direct annual contributions to municipal and provincial tax base (4.3%).





## Environment

- All smelter emissions below permit levels, including Fluoride, SO<sub>2</sub>, particulate (dust) and PAH emissions.
- \$508,000 invested in environmental initiatives in the Nechako Watershed, including the sturgeon hatchery, tributary restoration and integrated watershed research.
- Air Quality Health Index launched in Kitimat by Ministry of Environment, in collaboration with Rio Tinto.
- More than 600 juvenile sturgeon released into the Nechako River as part of the Nechako White Sturgeon Recovery Initiative.

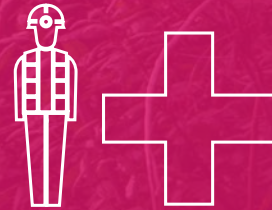


The foundation of our environmental commitment is to run a safe, responsible, sustainable and profitable business, being transparent in every aspect of our work. Learn more in our [2019 Annual Environmental Report](#).



## Health & Safety

- Improved all injury frequency rate (AIFR) over previous years. In 2019, we recorded an AIFR of 0.31, down from 0.35 in 2018, and well below the industry average.



## Our operations

- Employment of 1050 people, including both direct and contracted workers.
- \$11,298,035 million invested in operational and safety improvements, including expanded sow casting facility.
- Nearly 416,000 tonnes of aluminium produced across three main product lines, which represents a slight decrease (12 per cent) over previous years due to decreased orders and down time related to renovation of production cells.
- Continued expansion of port infrastructure, to support LNG Canada operations Terminal A Extension Project is anticipated to be complete by 2021.
- 2019 saw a continued improvement in customer satisfaction over previous years, however the number of complaints increased slightly primarily due to shipping matters. Rio Tinto is implementing new processes to address customer feedback and improve customer confidence.





## Climate change research, partnership with UNBC

Through a \$450,000 contribution, Rio Tinto, along with the Natural Sciences and Engineering Research Council (NSERC) formed a partnership with UNBC to research on the impacts of climate change in the Nechako watershed. The UNBC partnership is an integral way to learn about the climate impacts to this region, and to better plan and operate for the future. UNBC Environmental Science Professor Dr. Stephen Déry was named in 2019 as the first NSERC/Rio Tinto Senior Industrial Research Chair in Climate Change and Water Security.



## Community fire safety initiative with Cheslatta Nation

In 2019, Rio Tinto partnered with the Cheslatta Carrier Nation to support wildfire response capabilities for Regional District Bulkley Nechako Rural Area E communities. With a \$98,000 contribution from Rio Tinto, Cheslatta purchased and outfitted the trailers with fire response and safety gear and set up training for community members through the BC Fire Services department. The units are a first such initiative for the region with the hope that this will serve as a model for other rural and remote communities. The eight wildfire response units are located at Takysie Lake, Grassy Plains, Cheslatta Road, Ootsa Lake, Uncha Lake, Southbank, Colleymount and Tchesinkut Lake.

## Shames Mountain

The health and well-being of our employees, their families and our host communities is a key priority for Rio Tinto. Shames provides winter recreation activities for BC Works' families and friends and we were proud to provide \$30,000 to improve the facilities at the popular destination within our operational region. The funds will be dedicated to the beginners' rope tow with a new, covered conveyor lift making it easier for less experienced skiers to ride up to the runs.



# RioTinto

### For more information:

 [www.riotinto.com/operations/canada/bc-works](http://www.riotinto.com/operations/canada/bc-works)

 [www.riotinto.com/operations/canada](http://www.riotinto.com/operations/canada)

 @RioTintoBCWorks