



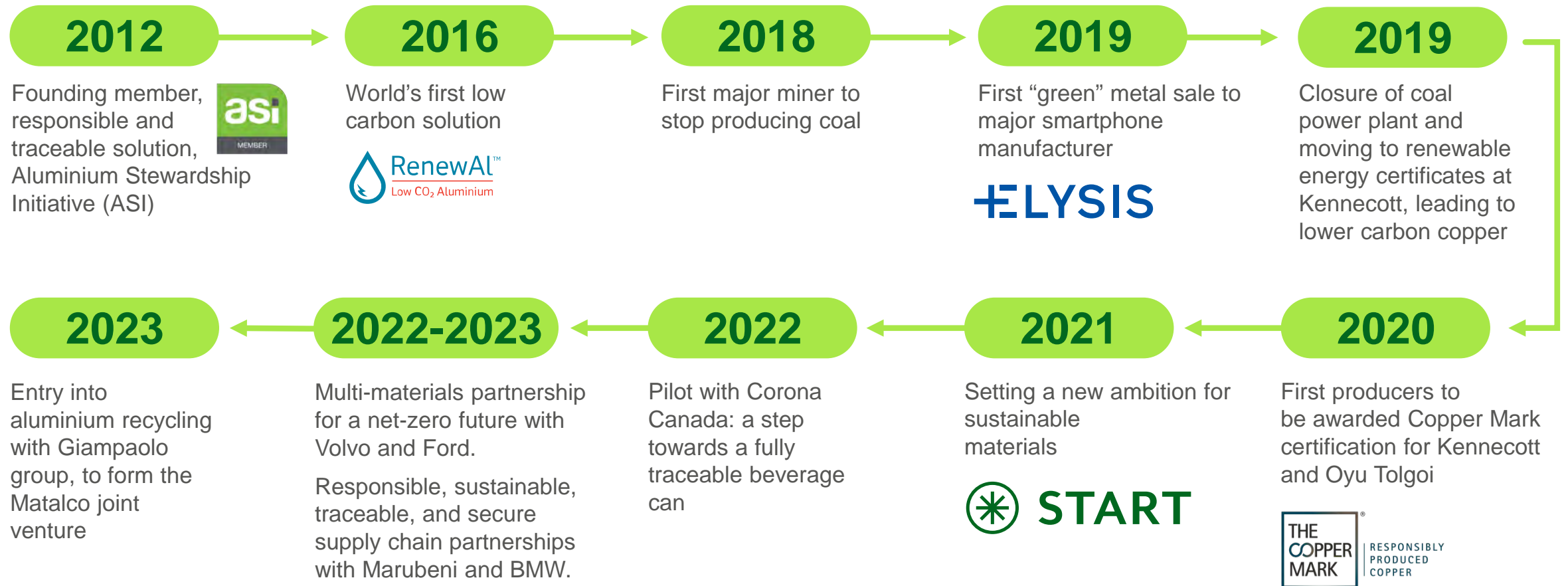
Materialising Progress

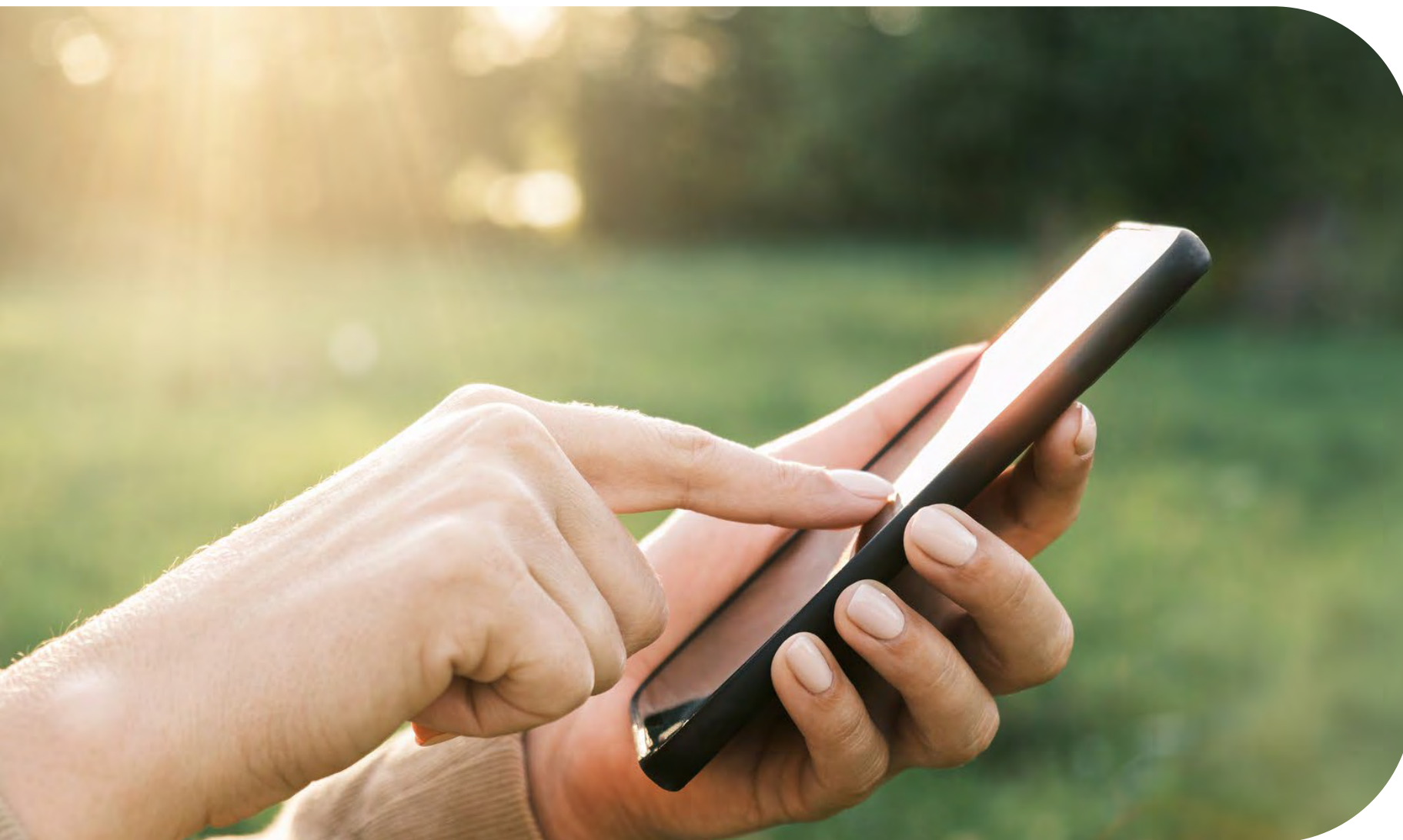
Brochure

Version: September 2024



Rio Tinto is an industry leader in sustainable thinking. We work with our partners across the value chain to tackle climate change and wider areas of ESG and START is part of this journey.



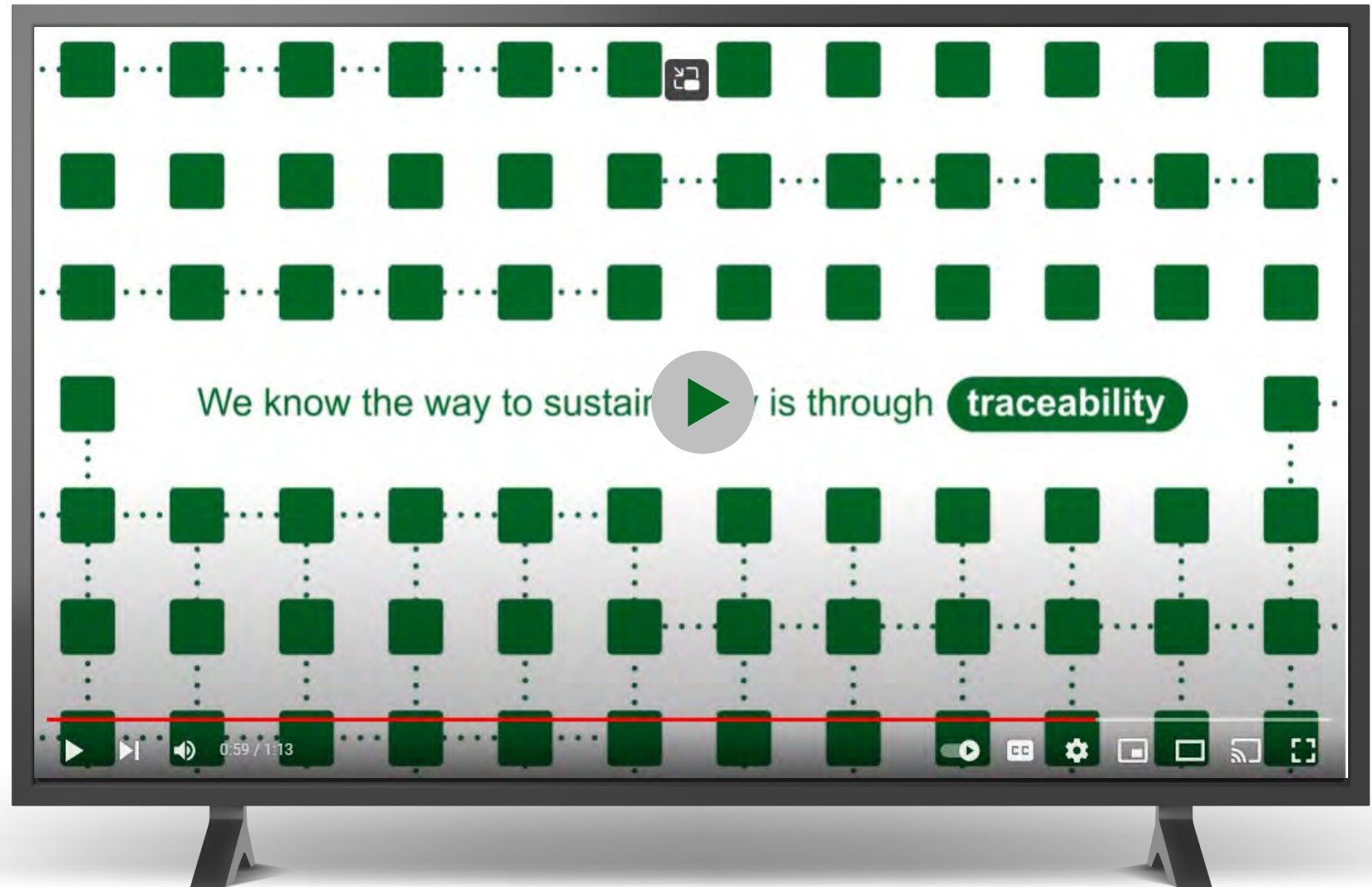


Contents

- 1 Why START?
- 2 What START can do for you
- 3 The START label
- 4 The START platform
- 5 START Enhanced
- 6 Case studies

Why START?

Introducing START



The ESG landscape is evolving, yet collecting and reporting ESG data remains complex, manual, and ineffective



01

Increasing demand for decarbonisation and ESG metrics from stakeholders



02

Greater regulatory requirements and compliance frameworks



03

Increasing demand for more sustainable products from consumers

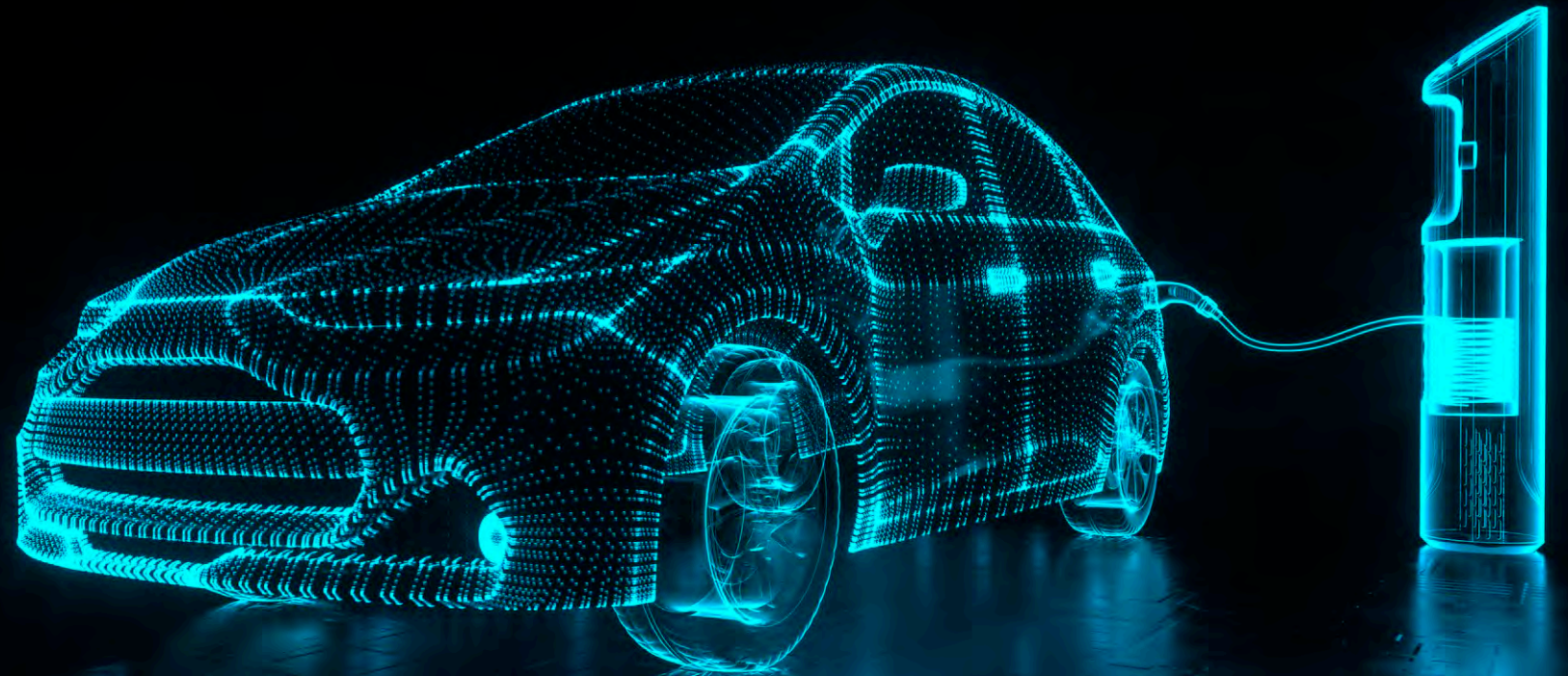
START is your solution to navigate the evolving ESG landscape

- We give you all the ESG information you need in the value chain, from START to finish, so that you can make more informed decisions with ease
- Helping you make your supply chain sustainable for people and the planet
- Progress toward your ESG goals



Our goal is a future where every product is entirely traceable, down to the last bolt...


Such data is available to anyone, in a way that everyone can trust, so that individuals and businesses can make more sustainable choices with ease. START is a step toward this future.



What START can do for you



START is the key to unlocking traceability and transparency



ESG

START provides all you need to make better material choices with ease. We share the environmental, social, and governance (ESG) standards followed throughout the material's entire production journey.

Transparency and Traceability

Supply chains are mired with visibility issues. START is changing that by unlocking transparency and traceability. We provide sustainability metrics and provenance information on Rio Tinto's products.

Assurance

Confidence in every choice: START reduces uncertainty as it provides third-party validated data, providing creditability and building trust on the information you need.

START simplifies ESG and provenance data, providing you with traceable insights

Get a holistic view across up to 14 ESG criteria and provenance information so that you can make more informed choices.



VCare – Chain Provenance



- Mining
- Refining / Process 1
- Smelting / Process 2
- Transportation
- Destination



VCare – Planet Environment



1. Global Warming Potential
2. Water Management
3. Waste Management
4. Energy (Electricity) Source
5. Air Emissions
6. Biodiversity
7. Land Management
8. Recycled Content



VCare – People Social



9. Safety Performance
10. Contribution to Communities
11. Third-party Assessment



VCare – Progress Governance



12. Ethics & Compliance Training
13. Diversity
14. Whistleblowing Programme

The START label

All the sustainability information you
need in one document



The START label

Just like a nutrition label that allows us to make more informed decisions about the products we buy, the START label helps us to make a more sustainable choice



The START label

Changing the way we talk about sustainability

Sustainability is personal and affects all of us. Thus, we introduced VCare—"Value Chain Care" to remind us that we should all care.

Sustainability is also holistic, so we are rethinking the way we talk about ESG –Planet, People and Progress.

VCare – Planet

Global Warming Potential*

| | tCO ₂ / tCu | tCO ₂ |
|-------------------------------|------------------------|------------------|
| Total Production | | |
| Comparison vs. Global Average | | |

Water Management**

| | m ³ / tCu | m ³ |
|------------------------|----------------------|----------------|
| Blue Water Consumption | | |

Waste Management**

| | kg / tCu | kg |
|--------------------------------|----------|----|
| Hazardous Waste Landfilled | | |
| Non-Hazardous Waste Landfilled | | |
| SO ₂ | | |
| Non-Mineral Recycled Waste | | |

Energy (electricity) Source**

| | % |
|--------------------------------|---|
| Primary Sources of Energy Used | |
| Primary Energy Demand | |
| Comparison vs. Global Average | |

Air**

| | kg / tCu | kg |
|---|----------|----|
| Eutrophication Potential | | |
| Acidification Potential | | |
| POCP (Photochemical Ozone Creation Potential) | | |

Biodiversity** IICN Red Listed Species

| | # |
|-----------------------|---|
| Critically Endangered | |
| Endangered | |

Land Management**

| | km ² |
|--------------------------------------|-----------------|
| Cumulative Disturbance: Kennecott | |
| Cumulative Rehabilitation: Kennecott | |

Recycled Content**

| | kg / tCu | kg |
|--------------------------------|----------|----|
| External Scrap - Post-Consumer | | |

VCare – People

Safety Performance***

| | 2020 | Unit |
|--|------|------|
| Fatalities | | |
| AIFR (All Injury Frequency Rate) | | |
| CRM Verifications (Critical Risk Management) | | |
| Recordable Injury Count | | |
| Recordable Illness Count | | |
| PFI (Potential Fatal Incident) | | |

Contribution to Communities***

| | 2020 | Unit |
|---|------|------|
| Community Investment | | |
| RED Contributions (Regional Economic Development) | | |
| R&D Contributions (Research & Development) | | |
| Significant Complaints (Community complaints, disputes, grievance mechanisms) | | |
| Local Procurement | | |

Third-Party Assessment***

| | 2020 | Unit |
|---|------|------|
| Due Diligence Checks Completed (KYC & KYB) | | |
| Due Diligence Checks on Third Parties (Baseline screening only) | | |
| Centrally Monitored Third-Parties | | |

VCare – Progress

Ethics & Compliance Training***

| | 2020 | Unit |
|---|------|------|
| Face-to-Face Training (No. Internal Employees) | | |
| Face-to-Face Training (No. Third-Party Employees) | | |
| Total Face-to-Face Training | | |
| Ethics and Compliance Online Training Modules Completed (No. Employees) | | |

Diversity***

| | 2020 | Unit |
|---------------------------------|------|------|
| Women in Senior Leadership | | |
| Women in Board Roles | | |
| Women in Total Workforce | | |
| Women as a % of Graduate Intake | | |

Whistleblowing Programme***

| | 2020 | Unit |
|--------------------------------|------|------|
| Total number of cases reported | | |
| • Business Integrity | | |
| • Finance | | |
| • Health, Safety & Environment | | |
| • Information Security | | |
| • Communities | | |
| • Personnel | | |
| • Miscellaneous | | |
| Cases substantiated | | |



The START platform

Find everything you need: from
order information to sustainability
data to delivery status

Meet the START platform

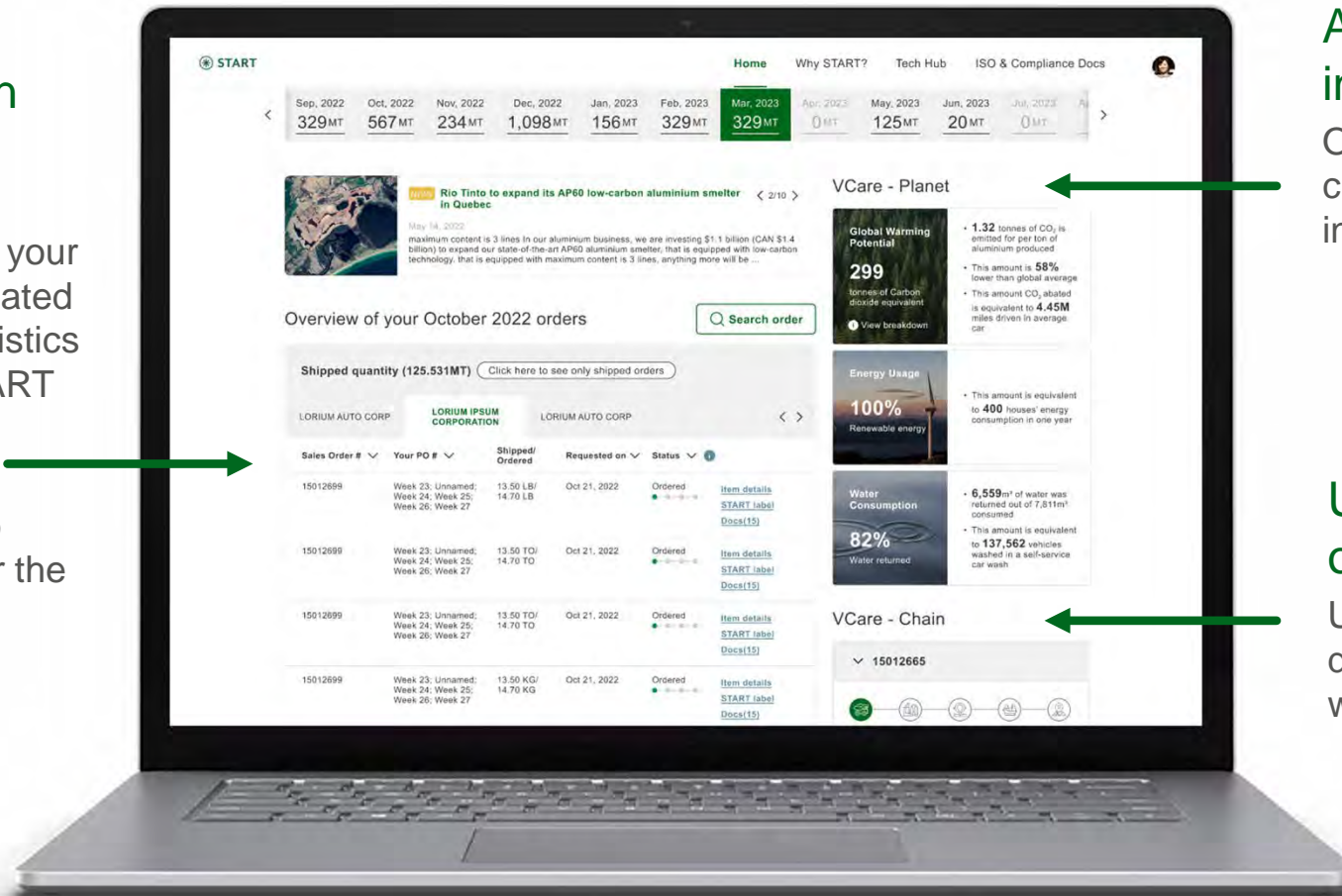


With the START platform, accessing and reporting ESG data is easier than ever

Locate orders and logistics information easily

At the centre of the dashboard, you'll find all your orders, as well as the related financial documents, logistics document, and your START labels.

You can also continue to search, filter and look for the information you need.



Access sustainability information at a glance

On the right panel, you will find the cumulative Planet metrics information of your monthly orders.

Understand the provenance of your metal

Under VCare-Chain, you will find details of your product journey and where it was made.



START Enhanced

A premium offering that offers third-party
validations and advisory services



START Enhanced is a premium solution designed to meet the needs of our most sustainable customers

- Independent third-party assurance
- Low carbon certification
- Sustainability advisory services
- ASI certification
- Green financing
- Environmental Product Declaration (EPD)

Contact START@riotinto.com to find out how we can help.

START Enhanced continues to build on our existing ecosystems for assurance:



START Sustainability Advisory Services can support you in meeting your environmental goals

- Furnish customised insights based on customers requirements
- Low carbon certification
- Assist in defining and mapping value chain to enable environmental product reporting requirements
- Help with issue-specific sourcing goals
- Provide comparative life cycle assessments
- Provide benchmarking advice to develop milestones throughout your sustainability journey
- Provide customised sustainability training to improve sustainability awareness





Interested in learning more? Book a demo

Contact your Rio Tinto
representative or complete the
demo request form.

Demo form

Case studies

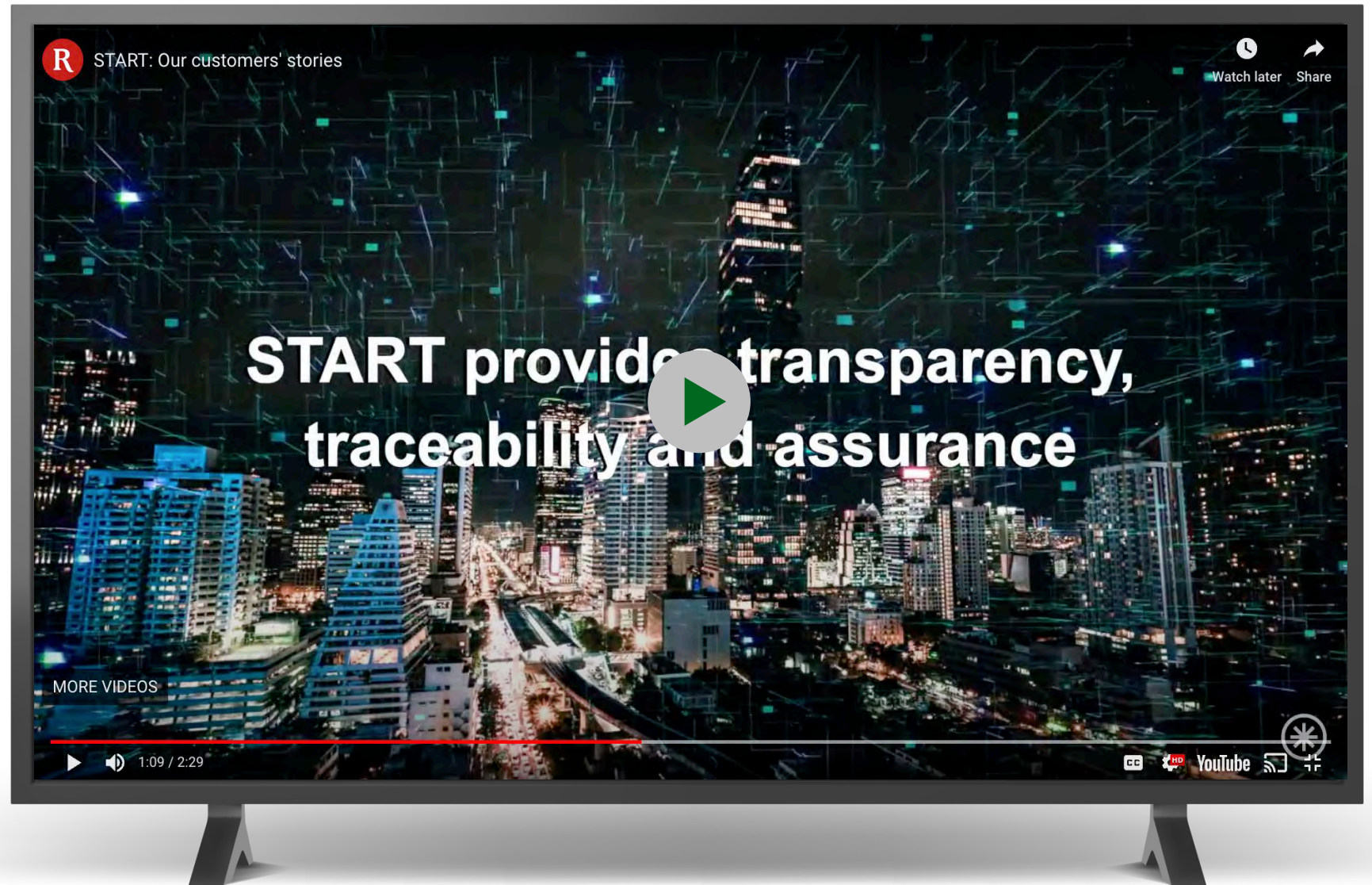


What our customers think about the evolving landscape and how START can help

“Consumers are demanding more and more transparency in what they buy.”
– AB InBev

“We realised that our communities were demanding it, from shareholders, to policy makers, to our customers, to our own employees.”
– Schneider Electric

[Read more](#)



Canada's first specially-marked low carbon can

Partnership with Corona Canada

In 2022, Rio Tinto announced, in partnership with Corona Canada, the launch of Canada's first specially-marked, low carbon beverage can, manufactured by Ball Corporation.

The cans, available through a pilot in Ontario, were made using aluminium from Rio Tinto and leveraging ELYSIS™ technology. As part of this limited release, 1.2 million cans were produced with a QR code to inspire consumers to learn more about the cans' low carbon footprint.

This pilot was a step towards putting a fully traceable beverage can in the hands of consumers.

[Read more](#)

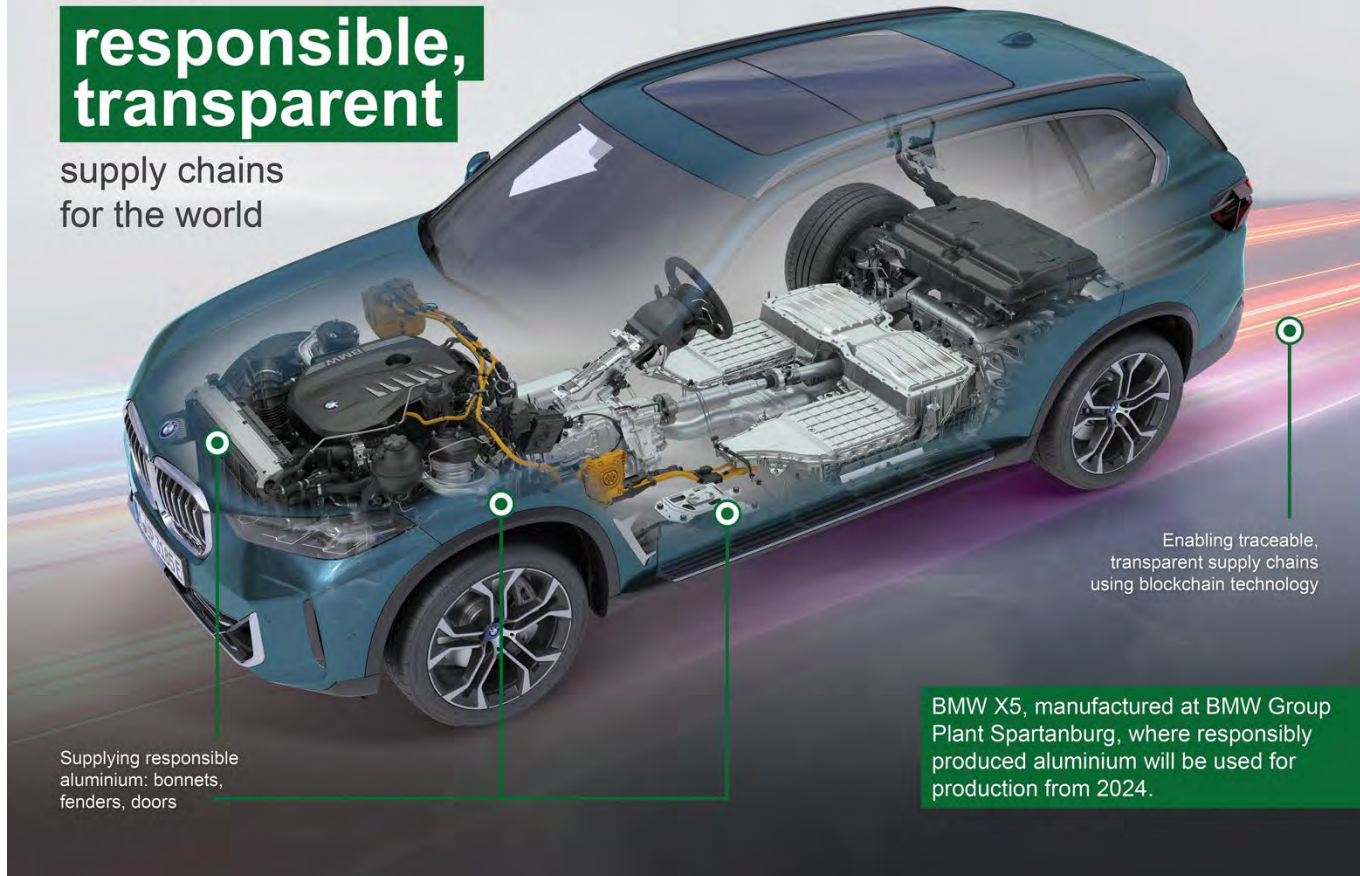




Creating

**responsible,
transparent**

supply chains
for the world



Supplying responsible
aluminium: bonnets,
fenders, doors

Enabling traceable,
transparent supply chains
using blockchain technology

BMW X5, manufactured at BMW Group
Plant Spartanburg, where responsibly
produced aluminium will be used for
production from 2024.

Road to a greener future

Partnership with BMW

Gone are the days when premium car buyers simply looked for speed, style, and luxury. Today, there's increasing interest in the origin, sustainability and emissions profile of the materials used to build their cars.

This fundamental shift in the automotive market has led to the creation of a new, innovative partnership between Rio Tinto and the BMW Group, leaders in their respective industries who share a common goal of developing more responsible, sustainable, traceable and secure supply chains.

Under this new partnership, Rio Tinto plans to provide responsibly sourced aluminium to the BMW Group's vehicle production plant in Spartanburg, South Carolina, for use in body components from 2024.

Rio Tinto and the BMW Group will also work to deploy START.

[Read more](#)

Together, we can
revolutionise what
it means to source
and produce
responsibly

 startresponsible.com

 start@riotinto.com

 **START**



Contact Us

 startresponsible.com

 start@riotinto.com

 [START](#)



RioTinto